



ROYAL
HORSE

JOINT SAFE GUARD

C-500

JOINT SAFE GUARD is a feed supplement for horses that limits inflammation due to repeated movements and helps maintain cartilage integrity. This product is recommended for horses with high strain on their joints (competition and racing) and for older horses suffering from joint pain.



JOINT SAFE GUARD is manufactured using a cold granulation process which maintains the integrity of the compounds in its formula for maximum efficiency.

This innovative product was designed by the Royal Horse team of nutritionists and equine veterinarians who work on developing ever more effective nutritional products for better welfare.

The effectiveness of JOINT SAFE GUARD's active ingredients has been demonstrated in the results of a study conducted on horses under real conditions.

JOINT SAFE GUARD's properties are based on the combination of three ingredients: **GLUCOSAMINE** and **MSM**, which support joint flexibility and elasticity, and **NON ANIMAL-DERIVED CHONDROITIN**, which maintains cartilage integrity while respecting the horse's natural physiological needs. This product is also enriched with **AOELITE®**, a plant-based antioxidant complex.



MAINTAINS CARTILAGE
INTEGRITY



SUPPORTS JOINT FLEXIBILITY
AND ELASTICITY



LIMITS
INFLAMMATION



**ROYAL
HORSE**

JOINT SAFE GUARD

C-500



Negative Laboratory Control

ANALYTICAL CONSTITUENTS %

Moisture.....	4.0
Crude fibre.....	1.2
Crude protein.....	2.4
Crude ash.....	63.4
Crude oil and fat.....	0.4
Calcium.....	20.0
Phosphorus.....	8.0
Sodium.....	0.1
Magnesium.....	0.3

ADDITIVES

VITAMINS mg/kg or IU

3a700 Vit E.....	10,000
3a831 Vit B6.....	500
3a300 Vit C.....	15,000

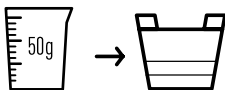
TRACE ELEMENTS mg/kg

3b810 Selenium (organic S.cerevisiae CNCM 1-3060)....	1.5
--	-----

FLAVOURING COMPOUNDS

INSTRUCTIONS FOR USE

Administer ideally with the evening ration.



HORSES AT RISK

2 doses of 50g/day for one month.
Repeat treatment 3 or 4 times a year.

WEAKENED HORSES

2 doses of 50g/day for four months.

SENIOR HORSES

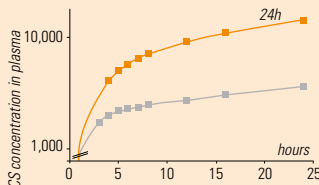
1 dose of 50 g/day.

INGREDIENTS

Bicalcium phosphate, calcium carbonate, cane molasses, methylsulfonylmethane, glucosamine, alfalfa, whey, chondroitin sulphate, alfalfa protein concentrate, and dried melon pulp.

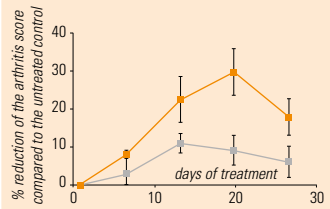
RESULTS

Comparison of bioavailability of non animal-derived CS compared to animal-derived CS



+ 43% Bioavailability* for low molecular weight non animal-derived chondroitin.

Effect of non animal-derived chondroitin on the arthritis score

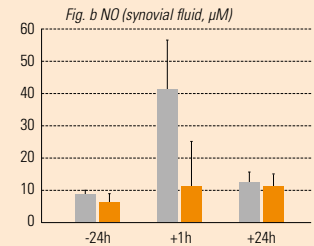
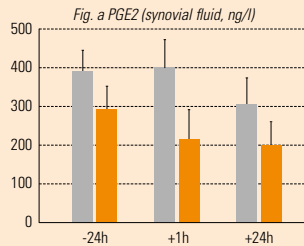


Non animal-derived CS reduces the arthritis score by 30%*.

— non animal-derived CS — animal-derived CS

Inflammation marker test

Decreased concentration of PGE2 (synovial fluid: Fig.a, $P = 0.02$), and NO (synovial fluid: Fig.b $P < 0.1$)



**Limits inflammatory effects of repeated movements.
Contributes to maintaining cartilage integrity*.**

■ AOE LITE® ■ Control

* in the experimental conditions of the trial.